

- m) Locate and fix Track Rod (14) to Front Brake Drums.
- n) Locate and fix Steering Arm (15) from second notch on driver's side underside of Underpan to Brake Drum.
- o) Locate and fix Exhaust Pipe (16) to Body (5).
- p) Locate and fix Starting Handle (17) to front of Body.
- q) Locate and fix Wheels (18) to Axles.
- r) Paint Radiator Grille **Matt Black**.
- s) Fix decals as shown in the illustration.

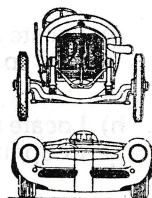
### Decal Fixing Instructions

- 1) Soak transfer in water for not more than 30 seconds.
- 2) When design releases itself on paper, slide it off face upwards on to model.
- 3) Press well down, wiping from centre outwards to squeeze out surplus water and air bubbles.
- 4) Leave to dry.

**john  
day**

models 27 Poolfield Drive, Solihull,  
Warwickshire, England 021-704 9176

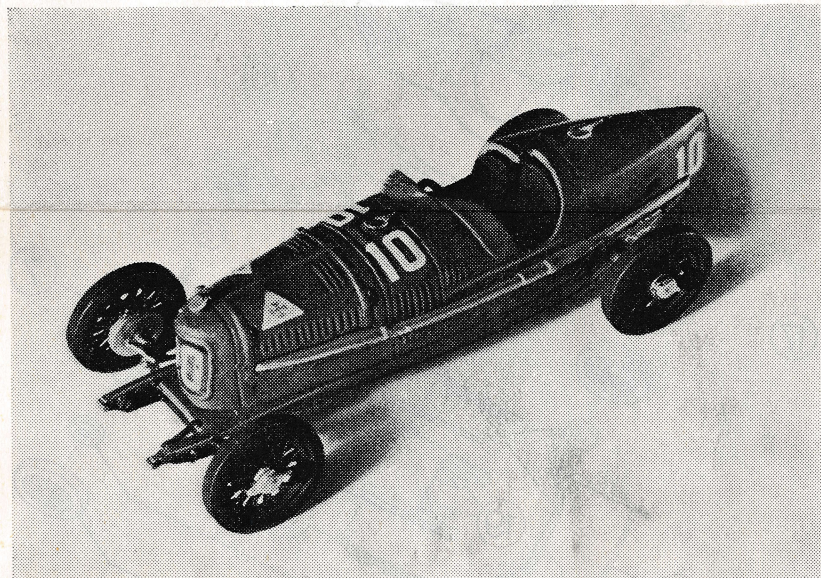
*Makers of scale kits for the collector.*



Printed in England by K.N.P.

**john  
day**

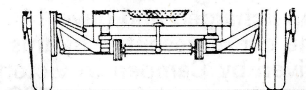
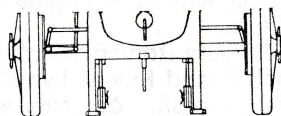
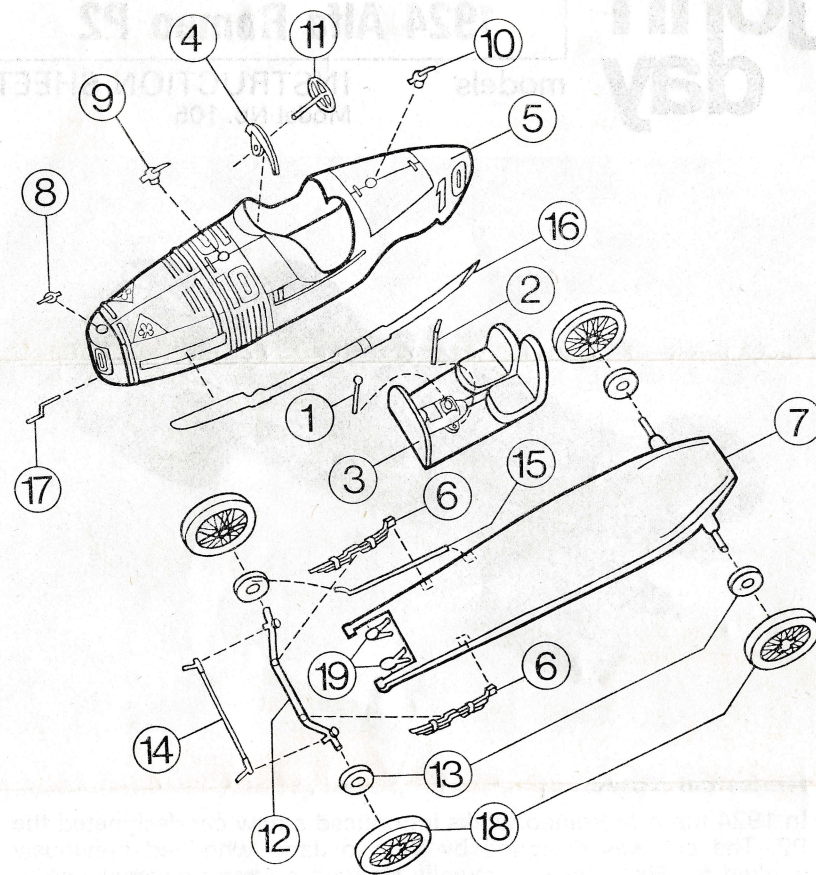
**1924 Alfa Romeo P2**  
models **INSTRUCTION SHEET**  
Model No. 105



### Historical Notes

In 1924 the Alfa Romeo works introduced a new car designated the P2. The car was designed by Vittorio Jano who had previously worked for Fiat. The P2 naturally showed a strong resemblance to earlier Fiat designs. This was particularly true of the engine which was an eight-cylinder design of 2 litres capacity. The engine was supercharged and gave 140 bhp at 5500 rpm.

The car represented by this model is the P2 Alfa Romeo which was driven by Campari to victory in the French Grand Prix at Lyon. His average speed for the 503 miles was 70.97 mph. Four cars were entered for the race to be driven by Campari, Wagner, Antonio Ascari and Enzo Ferrari. Ferrari was taken ill before the race and did not take part. Ascari retired on the 34th of the 35 lap race with engine trouble and Wagner finished fourth.



#### General Instructions

with the finest grade of emery paper. Care

#### General Instructions continued

- Read all instructions carefully before starting assembly.
- Before assembly work commences, clean down all parts with either petrol or cleaning fluid. This will ensure better joining of parts.
- Any adhesive suitable for joining metal to metal may be used. It is essential to follow the maker's instructions carefully. If heat is used to speed setting times the maximum tem-

perature to which the model should be subjected is 175°F (79.4°C).

- Some collectors prefer to paint their models before assembly whilst others may prefer to paint their model after assembly. In the latter instance there are certain parts which we would recommend be painted whilst assembly was being undertaken. Details of these are given in the painting notes.

#### Assembly Instructions

- Locate and fix Gearlever (1) and Handbrake (2) to Interior Unit (3).
- Locate and fix Dashboard (4) to Underside of Body (5).
- Locate and fix Front Springs (6) to Underpan (7).
- Paint Gear Lever Knob **Light Gloss Brown**.
- Paint Seats **Semi Matt Black**. When dry locate and fix interior unit (3) to underside of Body (5). Note the rear line of the seats match the line of the body.
- Locate and fix Filler Caps (8, 9 and 10). Note: Filler cap (8) has no locating button.
- Locate and fix Steering Wheel (11) to Dashboard (4).
- Locate and fix Front Axle (12)
- Paint Wheels **Gloss Black**. Knock-on Hub Caps should be left Silver. When dry, paint Tyres **Semi Matt Black**. Give the Tyres two coats of paint.
- Locate and fix Shock Absorbers (19) to Underpan (7). See diagram.
- Paint Body and Underpan. Before painting is started it is recommended that parts are cleaned down with either petrol or cleaning fluid. The Body should be given two thin coats of **Red Undercoat** each of which should be given plenty of time to dry before applying the next coat. For the best results we recommend two thin coats of Alfa Cherry **Red Gloss** paint. Between each coat of paint ensure that any dust is removed.
- Locate and fix Brake Drums