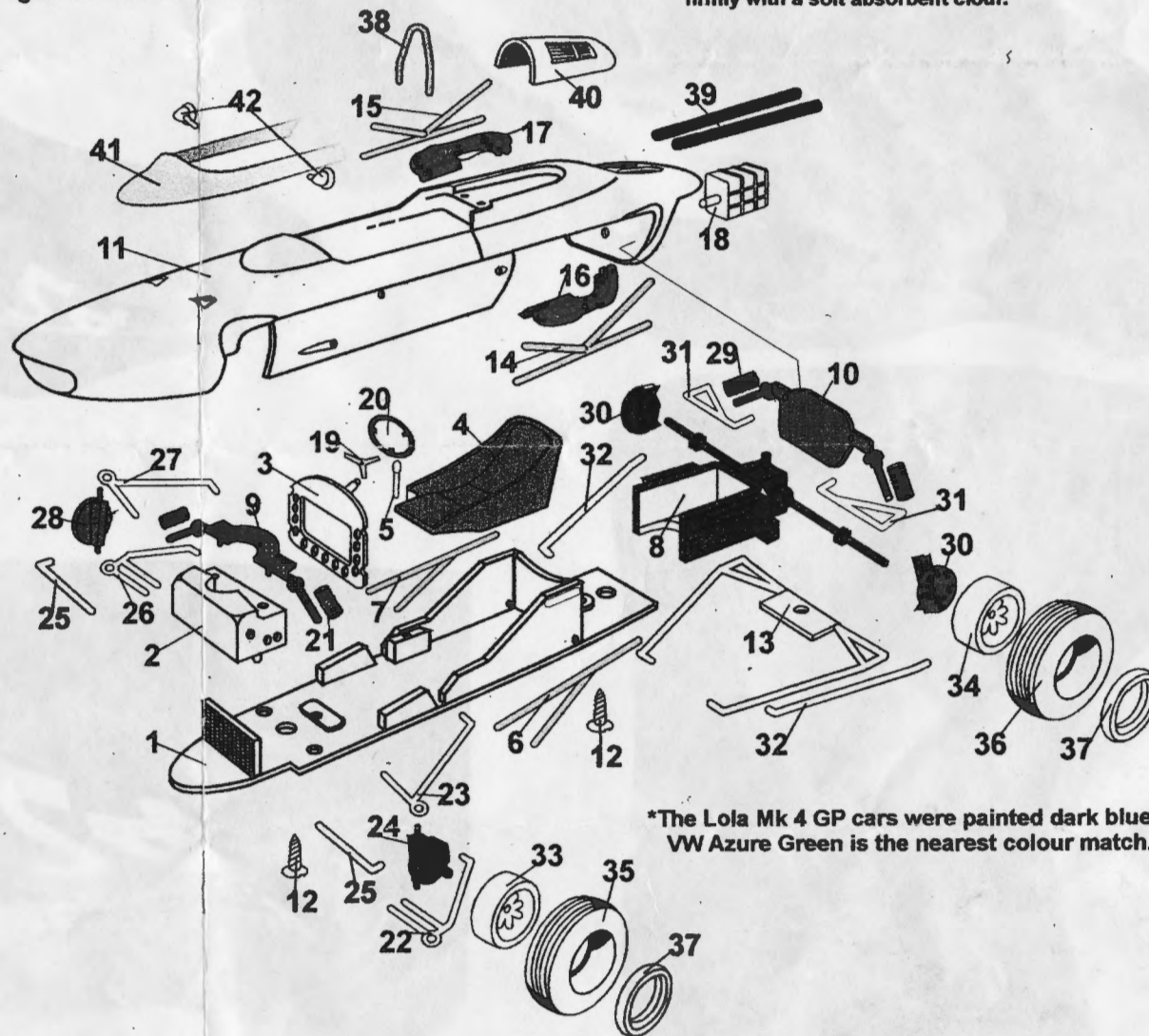


RL 115 1962 LOLA T4

Eric Broadley came very close to success in his 1st year of GP racing thanks to the skill of John Surtees and backing by the Bowmaker Banking House, the Lola Climax V8 finished 2nd in two Grands Prix and won the 2000 Guineas at Mallory Park. The cars painted dark blue with maroon nose bands and white wheels were co driven by Roy Salvadori . The multi tube space frame chassis was subject to modification during the season to improve handling problems during the early season events. John Surtees finished 4th in Monte Carlo, 5th in Belgium and France, followed by a second in the sunny British GP # 24 followed by another second place in the mist and rain around the Nurburgring #14. The Bowmaker money now began to run out and the cars became unreliable. Roy Salvadori failed to finish any GP race. The Bowmaker Racing Team was managed by Reg Parnell, who ran the cars again in 1963 under his own banner for Chris Amon and another champion motorcyclist Mike Hailwood.

- 1) CHASSIS gunmetal
- 2) Front Suspension BLOCK gunmetal
- 3) DASHBOARD matt black
- 4) SEAT matt maroon
- 5) GEAR LEVER burnish
- 6) LHS cockpit FRAME pale yellow
- 7) RHS cockpit FRAME pale yellow
- 8) ENGINE / AXLE gunmetal burnish drive shafts
- 9) Front SHOCK ABSORBERS matt black
Fit rear shock frame into rear of body
- 10) Rear SHOCK ABSORBERS matt black
- 11) BODYWORK VW Azure Green*
- 12) SCREWS x 2
- 13) Rear lower WISHBONES burnish
- 14) LHS engine FRAME pale yellow
- 15) RHS engine FRAME pale yellow
- 16) LHS lower EXHAUST gunmetal
- 17) RHS lower EXHAUST gunmetal
- 18) GEARBOX gunmetal
- 19) Steering wheel SPOKES etch
- 20) Steering wheel RIM semi matt black
- 21) Front COIL SPRINGS x 2 black
- 22) LHS lower WISHBONE burnish
- 23) Upper WISHBONE burnish
- 24) Front HUB gunmetal
- 25) STEERING ARMS burnish x 2
- 26) RHS lower WISHBONE burnish
- 27) Upper WISHBONE burnish
- 28) Front HUB gunmetal
- 29) Rear COIL SPRINGS x 2 black
- 30) Rear HUBS x 2 gunmetal
- 31) Rear TOP LINKS x 2 burnish
- 32) Rear upper RADIUS ARMS
- 33) Front WHEELS x 2 white
- 34) Rear WHEELS x 2 white
- 35) Front TYRES
- 36) Rear TYRES
- 37) Wheel RIMS x 4 burnish
- 38) ROLL OVER HOOP pale yellow
- 39) EXHAUST PIPES x 2 gunmetal
- 40) ENGINE COVER burnish gunmetal vents
- 41) SCREEN vac form
- 42) MIRRORS x 2 burnish



Check all parts against the exploded drawings, clean off any casting flash with a modelling knife and needle files, and drill out all location holes. Paint parts prior to assembly using automotive paints in aerosol form, commencing with primer followed by 3 to 4 light coats of colour. Assembly should follow the numerical sequence of the parts list, we suggest the use of epoxy or contact adhesive. Decals should be soaked in warm water, slid into place and pressed down firmly with a soft absorbent cloth.

*The Lola Mk 4 GP cars were painted dark blue. VW Azure Green is the nearest colour match.

HEATH WARNING: Please ensure that when working with whitemetal, dust particles are not inhaled and that hands are thoroughly washed prior to eating.

