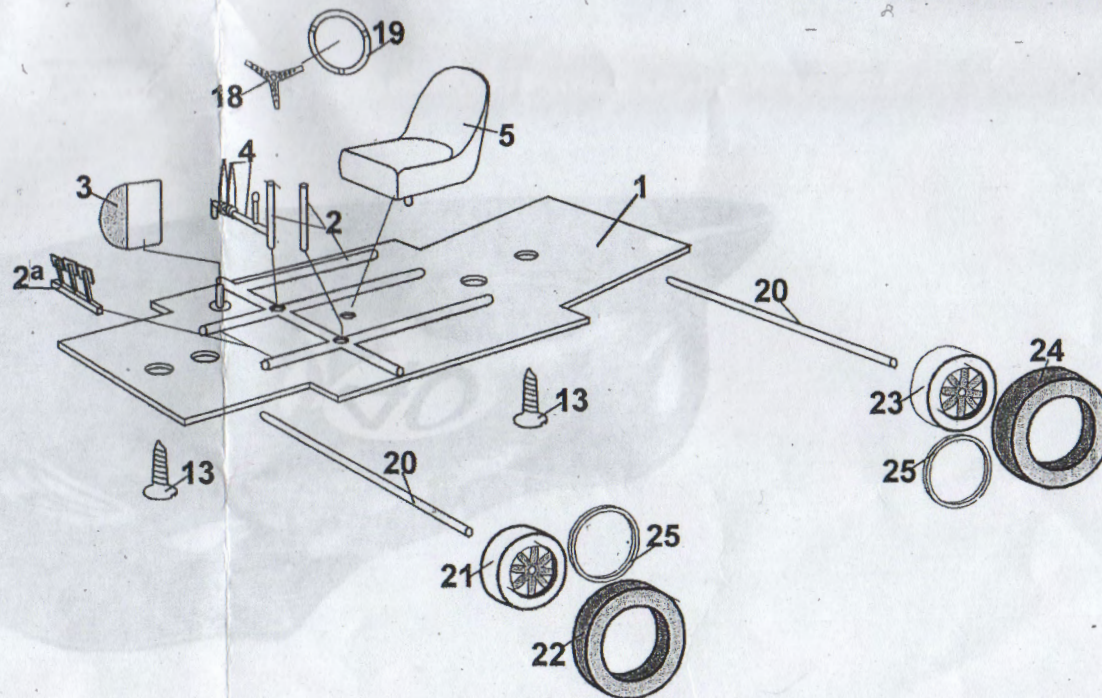
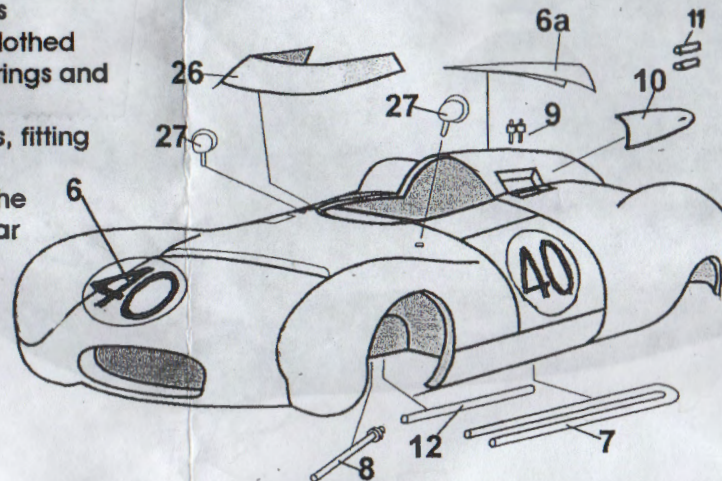


RL 108b Cooper 'Bob tail'

Jack Brabham F1 Bristol Special 1955 British Grand Prix

The Cooper T 39 'Bob tail' was produced to provide opposition to Lotus in the 1100cc- 1500cc sports car class. The tubular chassis car was clothed in close fitting aluminium bodywork, suspended on transverse leaf springs and powered by mid mounted 1460cc Coventry Climax 100bhp engines. Jack Brabham constructed his own Bob tail (T-40) at the Cooper works, fitting a larger Bristol engine he entered the 1955 British GP at Aintree, only finishing the car on the morning of the race. After being lapped by the race leading Mercedes and Maserati's he retired after 31 laps. The car ran a more successful club season and was shipped out to Australia when Jack returned home at the end of the year.

- 1) CHASSIS silver
- 2) Chassis TUBES grey
- 2a) PEDALS burnish
- 3) FUEL TANK burnish
- 4) GEAR LEVER burnish
- 5) SEAT semi matt brown
- 6) BODYWORK pale green
- 6a) Engine cover EXTENSION pale green
- 7) WATER PIPES red
- 8) Steering COLUMN burnish
- 9) Weber CARBURETTORS gunmetal
- 10) Carburettor INTAKE COVER pale green
- 11) EXHAUST PIPE gunmetal
- 12) Chassis TOP TUBE grey
- 13) SCREWS x 2
- 18) Steering wheel SPOKES etch
- 19) Steering wheel RIM brown
- 20) AXLES x 2
- 21) Front WHEELS x 2 grey
- 22) Front TYRES x 2
- 23) Rear WHEELS x 2 grey
- 24) Rear TYRES x 2
- 25) Wheel RIMS x 4
- 26) WINDSCREEN vac form
- 27) Wing MIRRORS x 2 pale green



Check all parts against the exploded drawings, clean off any casting flash with a modelling knife and needle files, and drill out all location holes. Paint parts prior to assembly using automotive paints in aerosol form, commencing with primer followed by 3 to 4 light coats of colour. Assembly should follow the numerical sequence of the parts list, we suggest the use of epoxy or contact adhesive. Decals should be soaked in warm water, slid into place and pressed down firmly with a soft absorbent cloth.

To build the Brabham F1 model, Fill in headlight and carb' intake areas exhaust, rear light and No plate holes.

HEATH WARNING: Please ensure that when working with whitemetal, dust particles are not inhaled and that hands are thoroughly washed prior to eating.

