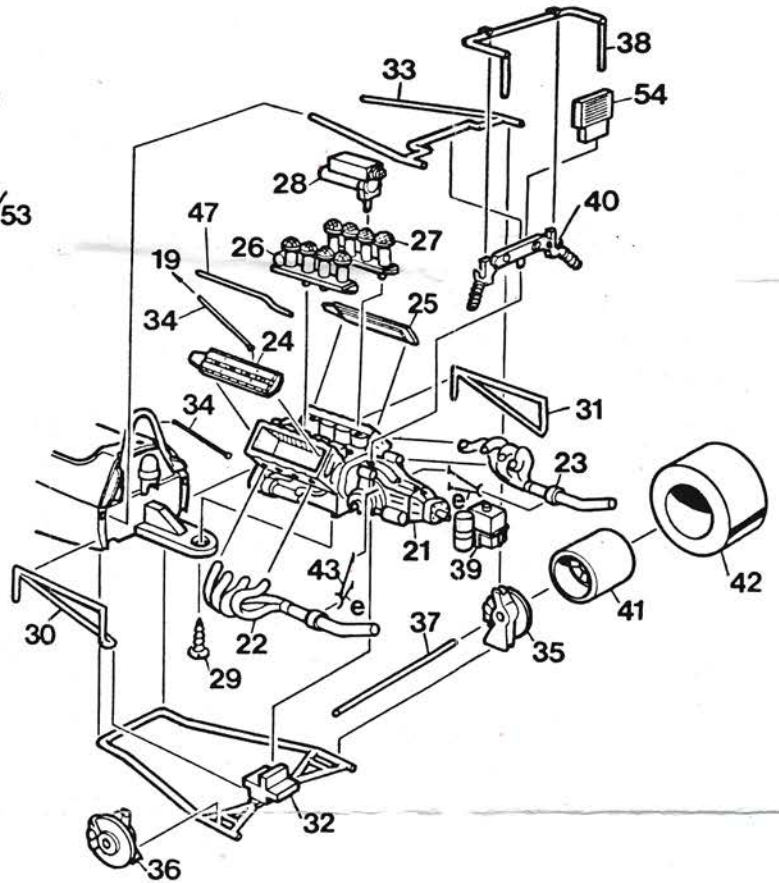
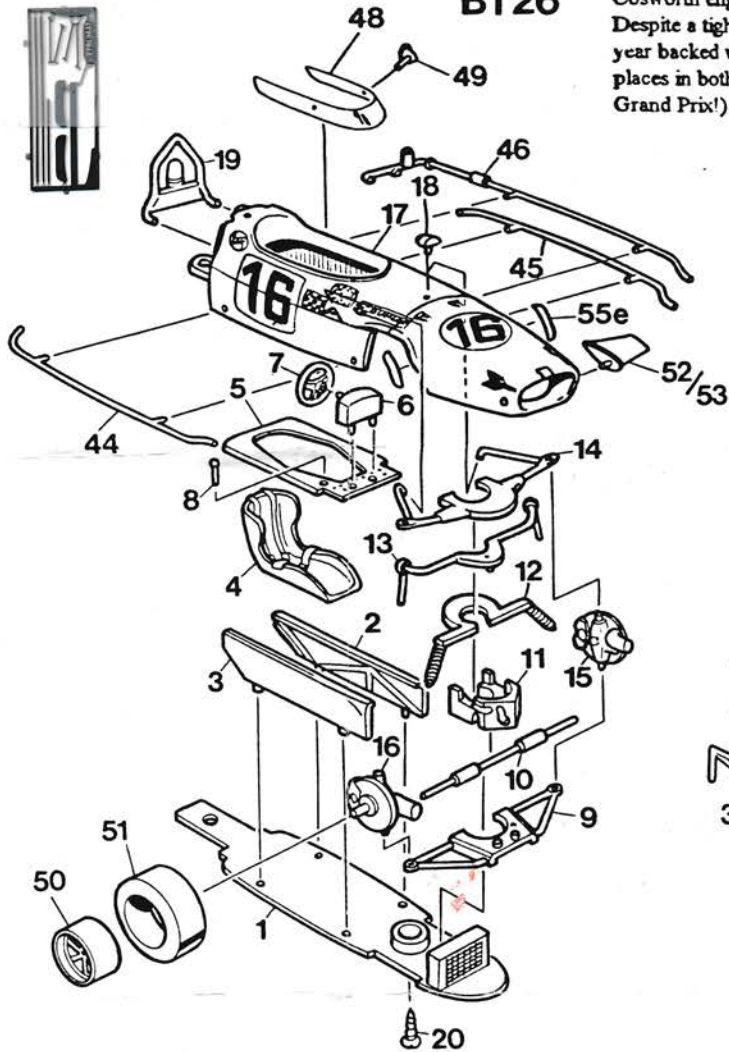


RL36 Piers Courage Brabham BT26

Leading F2 entrant Frank Williams moved up to F1 in 1969 with an ex-works Brabham BT26, purchased for just £3,500, a further £500 was paid to designer Robin Herd (later of March) for a Cosworth engine installation, Frank had a competitive car for his talented driver, Piers Courage. Despite a tight budget the always impeccably prepared Dunlop shod car often embarrassed the Good year backed works team, gaining 16 championship points in 9 Grands Prix entered, including 5th places in both the British and Italian Grands Prix, and brilliant 2nd places in Monaco (the team's 2nd Grand Prix!) and the U.S. Grand Prix.



- 1 UNDERPAN silver
- 2 CHASSIS FRAME LH silver/body colour tubes
- 3 CHASSIS FRAME RH silver/body colour tubes
- 4 SEAT black/blue belts
- 5 COCKPIT INNER SURROUND body colour
- 6 DASHBOARD black
- 7 STEERING WHEEL black
- 8 GEAR LEVER silver
- 9 LOWER FRONT WISHBONES silver
- 10 STEERING ARMS silver
- 11 FRONT OIL TANK silver
- 12 FRONT SPRINGS silver
- 13 FRONT ANTI-ROLL BAR silver
- 14 FRONT UPPER SUSPENSION silver/radius rods black
- 15 FRONT HUB LH gunmetal
- 16 FRONT HUB RH gunmetal
- 17 BODY dark blue (fill central NACA duct)
- 18 NOSE SCOOP silver
- 19 ROLL HOOP silver
- 20 FRONT SCREW
- 21 ENGINE/GEARBOX gunmetal
- 22 EXHAUST LH black
- 23 EXHAUST RH black
- 24 CAM COVER LH black
- 25 CAM COVER RH black
- 26 INTAKE TRUMPETS LH silver
- 27 INTAKE TRUMPETS RH silver
- 28 IGNITION PACK silver

- 29 REAR SCREW
- 30 ENGINE SUPPORT FRAME LH body colour
- 31 ENGINE SUPPORT FRAME RH body colour
- 32 REAR LOWER SUSPENSION silver
- 33 REAR UPPER SUSPENSION silver
- 34 ROLL BAR SUPPORTS x2 silver
- 35 REAR HUB RH gunmetal
- 36 REAR HUB LH gunmetal
- 37 REAR AXLE ROD black
- 38 REAR ANTI-ROLL BAR silver
- 39 REAR OIL TANK gunmetal
- 40 CROSSMEMBER black
- 41 REAR WHEEL x2 silver/black spokes
- 42 REAR TYRE x2
- 43 EXHAUST SUPPORTS x2 etch silver
- 44 OIL PIPE RH silver
- 45 OIL PIPE LH silver
- 46 WATER PIPE silver
- 47 BREATHER PIPE black
- 48 SCREEN
- 49 MIRRORS x2 silver
- 50 FRONT WHEELS x2 silver/black spokes
- 51 FRONT TYRES x2
- 52 FRONT WING LH white
- 53 FRONT WING RH white
- 54 OIL COOLER gunmetal
- 55 FRONT SUSPENSION SHROUDS x2 etch silver

→ The 1968 Brabham BT26 Repco is available as SMTS model RL37
 The 1969 Works Brabham BT26 Cosworth is also available as SMTS model RL22

HEALTH WARNING: Please ensure when working with whitemeta. that dust particles are not inhaled and that hands are thoroughly washed prior to eating