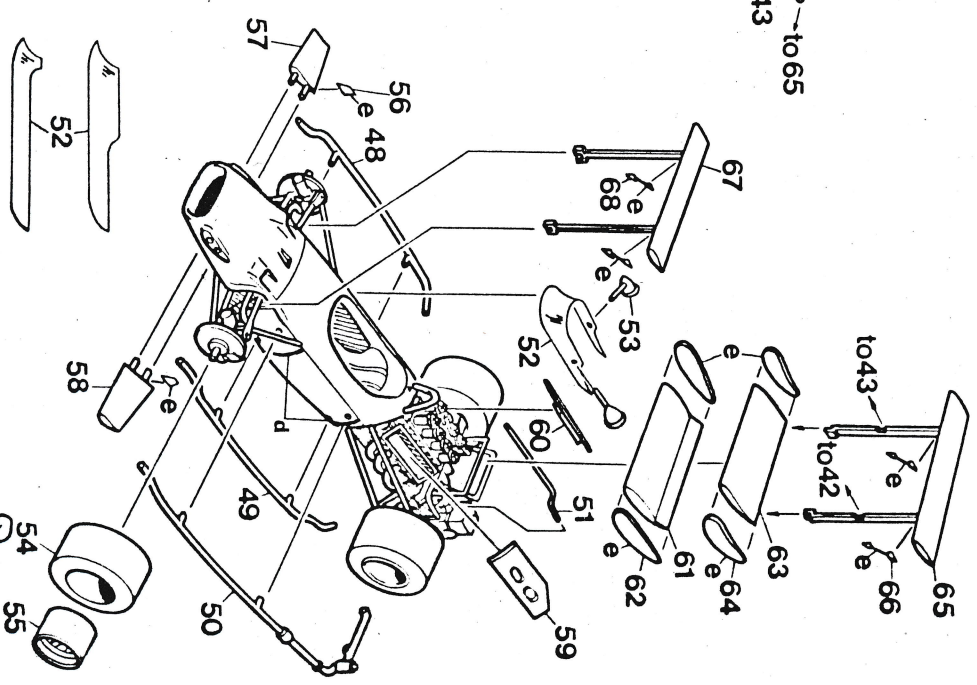
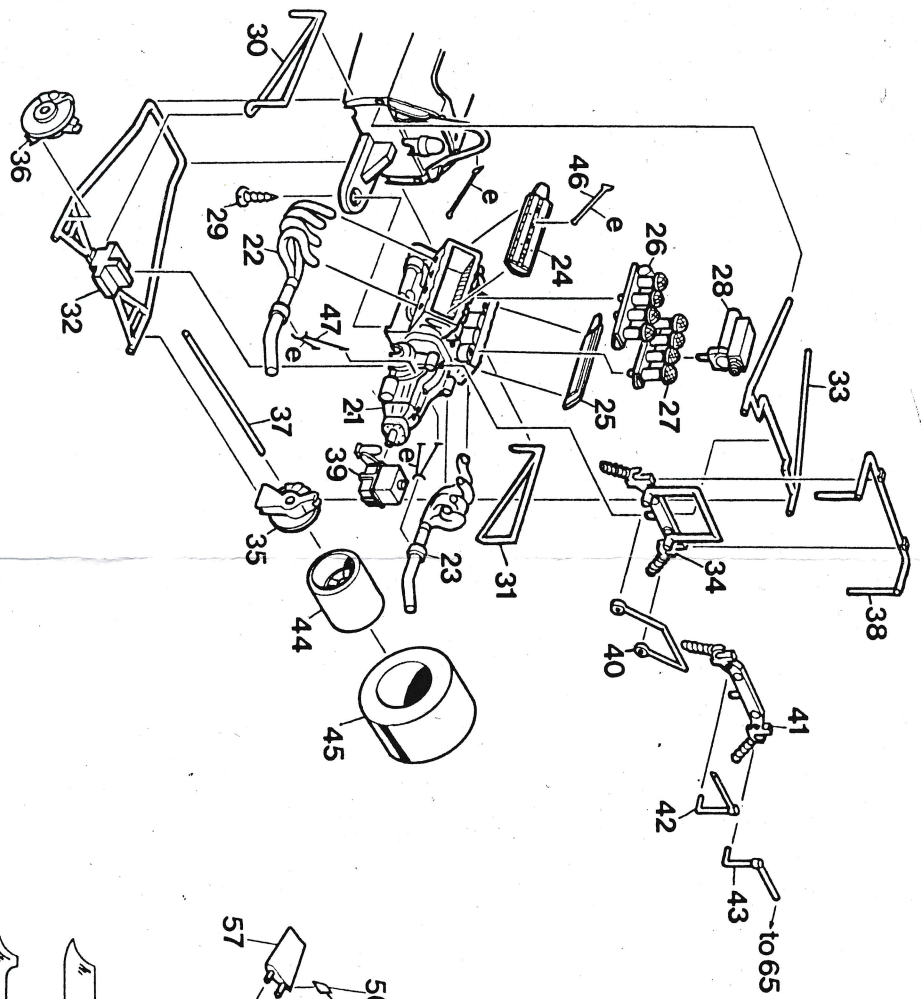
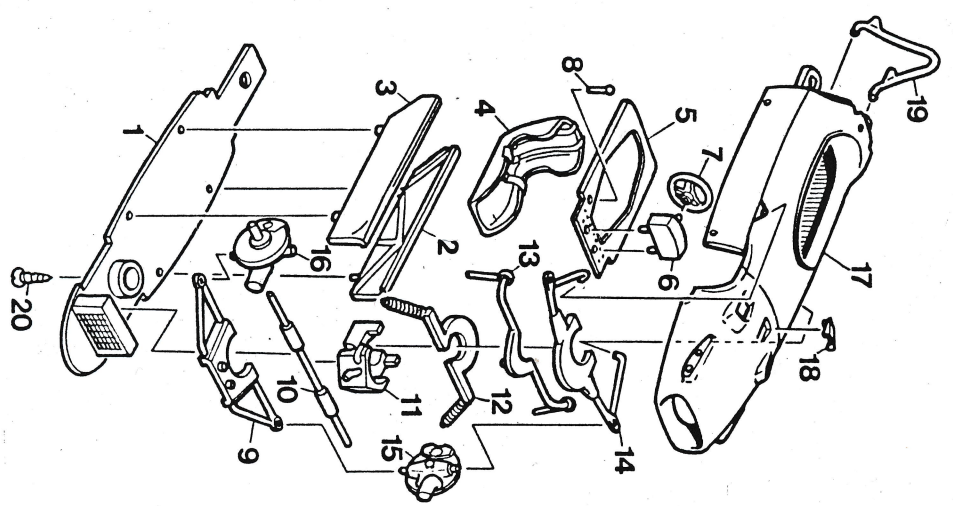


In 1966 and 1967 the Brabhams of Jack Brabham & Denny Hulme had won the world championship with their Repco engines. For 1968 Repco produced a 4-cam version of their engine, to try to stay with the new Cosworth DFVs, but they withdrew from G.P. racing at the end of an unsuccessful year.

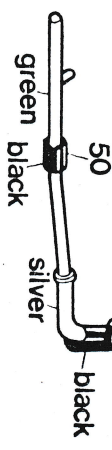
Brabham were left with a good car for 1969, the BT26, but with no engine; so they had to fit the now reliable Cosworth DFV. The season saw Brabham and new team mate Jackie Ickx win 4 races but the championship went to Jackie Stewart's Matra. Aerodynamics were coming to the fore in 1969, this kit includes various alternative parts to build high wing or low wing versions, as raced to victory by Jack Brabham in the Silverstone International Trophy, or the Canadian Grand Prix winner driven by Jackie Ickx.



Check the parts against the parts list and exploded drawing and clean off any casting flash using a modelling knife and needle files. Drill out all location holes, and paint the parts prior to assembly using automotive paints in aerosol form, commencing with primer followed by 3 or 4 light coats of colour, small components should be brush painted using modelling paints. Assembly should follow the numerical sequence of the drawing using a contact adhesive or quick setting two-part epoxy glue. Finally add the decals which should be soaked in warm water slid into place, and pressed down firmly with a soft absorbent cloth.

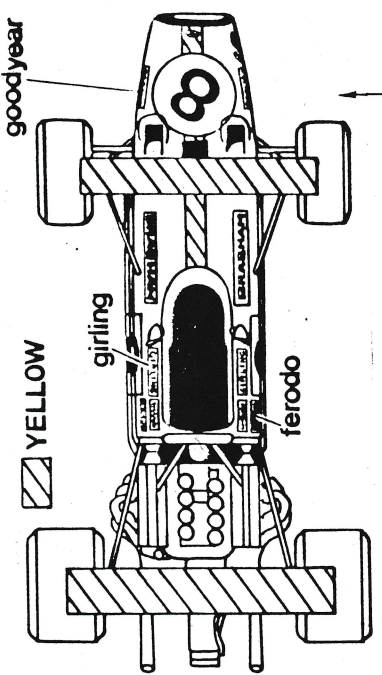
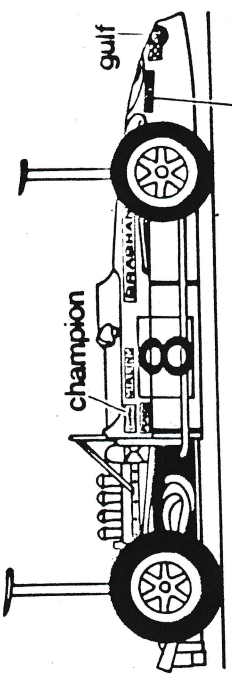
Note that the roll-hoop strays (46) should be fitted between the roll-hoop and cam covers when engine covers are not in place. When the engine covers are fitted the lower end of the strays locate in the forward holes in the covers.

The screen (52) should be trimmed to the side profiles shown, generally speaking Jack Brabham used the taller screen and Jackie Ickx the lower.



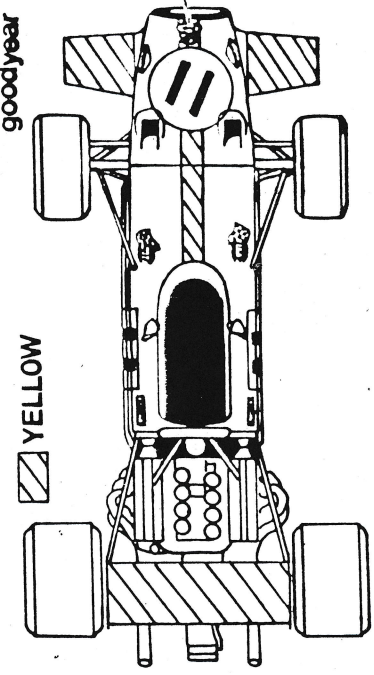
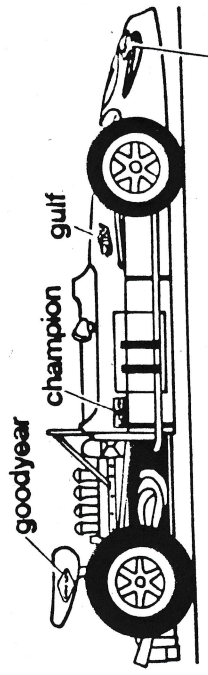
- 1) UNDERPAN silver
- 2) CHASSIS FRAME LEFT light green, body colour frame tubes
- 3) CHASSIS FRAME RIGHT light green, body colour frame tubes
- 4) SEAT black, blue belts
- 5) COCKPIT INNER SURROUND body colour
- 6) DASHBOARD black
- 7) STEERING WHEEL black
- 8) GEAR LEVER silver
- 9) LOWER FRONT WISHBONES silver or black
- 10) STEERING ARMS silver or black
- 11) FRONT OIL TANK silver
- 12) FRONT SPRINGS black
- 13) FRONT ANTI-ROLL BAR silver or black
- 14) UPPER FRONT SUSPENSION silver or black
- 15) FRONT HUB LEFT gunmetal, silver disc, black scoop
- 16) FRONT HUB RIGHT gunmetal, silver disc, black scoop
- 17) BODY green (Triumph Racing Green)
- 18) NOSE SCOOP yellow (to match decal)
- 19) ROLL HOOP body colour
- 20) FRONT SCREW
- 21) ENGINE/GEARBOX gunmetal
- 22) EXHAUST LEFT black, silver tail pipes
- 23) EXHAUST RIGHT black, silver tail pipes
- 24) CAM COVER LEFT black
- 25) CAM COVER RIGHT black
- 26) INTAKE TRUMPETS LEFT silver
- 27) INTAKE TRUMPETS RIGHT silver
- 28) IGNITION PACK silver
- 29) REAR SCREW
- 30) ENGINE SUPPORT FRAME LEFT body colour
- 31) ENGINE SUPPORT FRAME RIGHT body colour
- 32) REAR LOWER SUSPENSION silver or black
- 33) REAR UPPER SUSPENSION silver or black
- 34) REAR CROSSMEMBER A (LOWER WINGS) black silver wing struts
- 35) REAR HUB RIGHT gunmetal, silver disc
- 36) REAR HUB LEFT gunmetal, silver disc
- 37) REAR AXLE ROD silver or black
- 38) REAR ANTI-ROLL BAR silver or black
- 39) REAR OIL TANK silver, black frame
- 40) WING SUPPORT STRUTS silver or black

- 41) CROSSMEMBER B (TALL WING) black
- 42) TALL WING SUPPORT LEFT silver or black
- 43) TALL WING SUPPORT RIGHT silver or black
- 44) REAR WHEEL x 2 black
- 45) REAR TYRE x 2
- 46) ROLL-BAR STAY x 2 etched, silver or black (see notes)
- 47) EXHAUST SUPPORTS x 2 etched silver
- 48) OIL PIPE LEFT body colour
- 49) OIL PIPE RIGHT body colour
- 50) WATER PIPE green/silver/black(see sketch)
- 51) BREATHER PIPE black
- 52) SCREEN (see notes & drawing)
- 53) MIRRORS x 2 silver
- 54) FRONT TYRE x 2
- 55) FRONT WHEEL x 2 black
- 56) FRONT WING TRIM QUADRANTS x 2 etched silver
- 57) FRONT WING RIGHT yellow
- 58) FRONT WING LEFT yellow
- 59) ENGINE COVER LEFT body colour
- 60) ENGINE COVER RIGHT body colour
- 61) LARGE REAR WING yellow
- 62) LARGE WING ENDPLATES x 2 etched silver
- 63) SMALL REAR WING yellow
- 64) SMALL WING ENDPLATES x 2 etched silver
- 65) TALL REAR WING yellow, black struts
- 66) TALL REAR WING UPPER STAYS x 2 etched silver
- 67) TALL FRONT WING yellow, black struts
- 68) TALL FRONT WING UPPER STAYS x 2 etched silver



Silverstone International Trophy Jack Brabham 1st place

No front wings fitted, so file off wing roots on nose sides.
 Fill NACA duct in nose.
 High screen fitted.
 No engine covers.
 Tall wings front & rear with crossmember B.(41) and stays (42,43,66 & 68)
 Suspension and wing struts black.



Canadian Grand Prix Jackie Ickx 1st place

Large rear wing (61) with end plates (62) fitted using crossmember (34) and struts (40).
 Low screen, engine covers (59 & 60), front wings (57 & 58) and quadrants (56), and nose scoop (18) also fitted.
 Suspension and struts were silver.