

K & R REPLICAS

MALT HOUSE FARM BUNGALOW
QUEEN STREET
SANDHURST
TN18 5HR
TEL/FAX 01580 850859

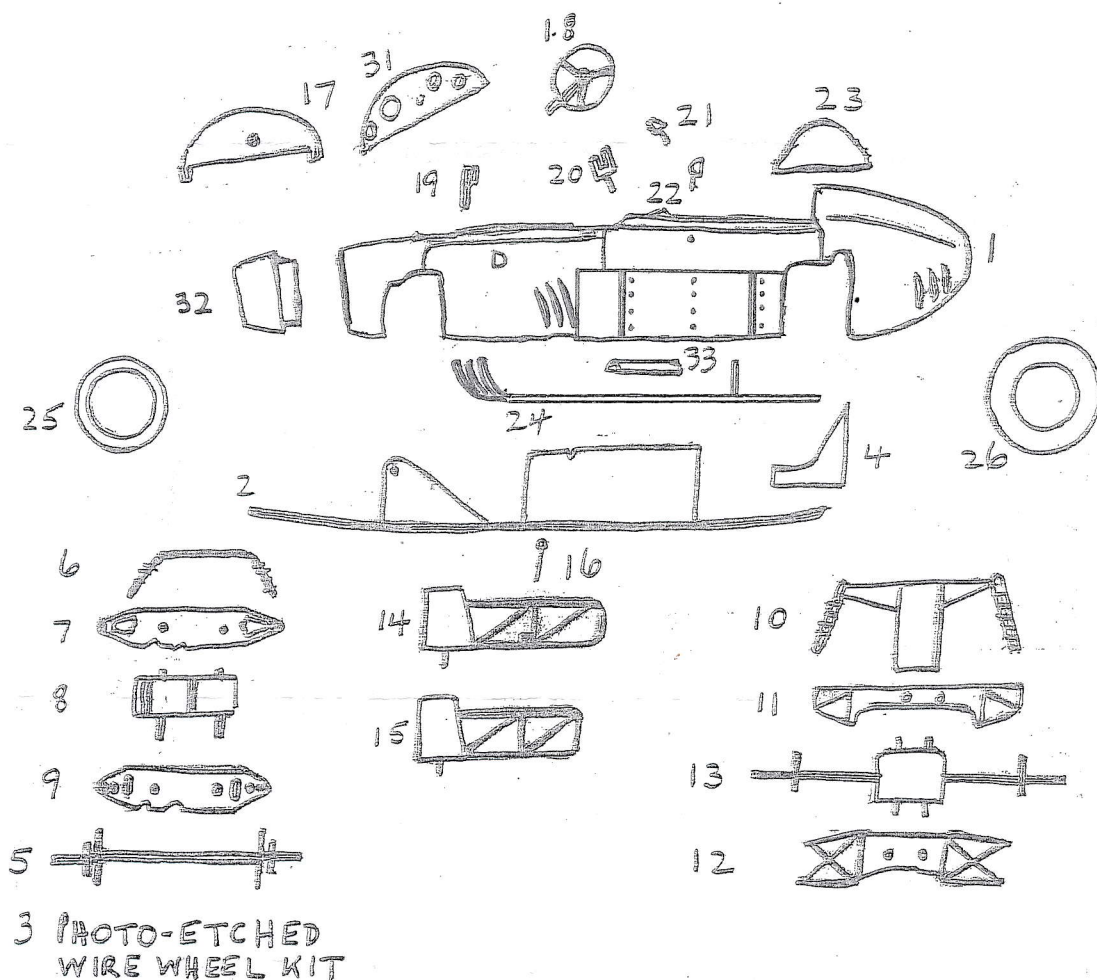
QUALITY 1/43RD AND 1/24TH SCALE METAL KITS

Proprietors J B Roff, R E Roff & S J Roff

web address <http://www.kandrreplicas.co.uk>

email info@kandrreplicas.co.uk

FERRARI 246 DINO BELGIUM GP 1960 MAIRESSE



PARTS LIST

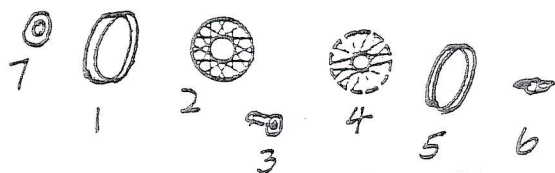
- | | | |
|----------------------------|-------------------------------|------------------------------|
| 1. Body | 14. Side frame member - left | |
| 2. Chassis | 15. Side frame member - right | |
| 3. P/E wire wheel kit | 16. Gear lever | |
| 4. Seat | 17. Dashboard backing plate | |
| 5. Front axle | 18. Steering wheel | |
| 6. Front springs | 19. Carburettor intakes | |
| 7. Top front suspension | 20. Accelerator & brake | |
| 8. Suspension block | 21. Clutch | |
| 9. Bottom front suspension | 22. Driving mirrors (2) | |
| 10. Rear springs | 23. Head rest | 27. Vac-forms |
| 11. Top rear suspension | 24. Exhaust (L & R) | 28. Transfers |
| 12. Bottom rear suspension | 25. Front tyres (2) | 30. Etched radiator grille |
| 13. Rear axle | 26. Rear tyres (2) | 31. Etched dashboard |
| | | 32. Nose cove |
| | | 33. Exhaust heat shields (2) |

PREPARATION. Remove any flash and mould lines from castings, drilling out holes where necessary. Rubbing down with fine grade wet & dry paper. Check all parts fit prior to painting, adjusting if required. Add nose cone to body filling and join line. Undercoat body before finishing in final colour. Aerosols of car touch up paint are recommended.

ASSEMBLY. All parts should be painted prior to assembly. A two part epoxy resin is recommended for gluing the model together. Assemble photo-etched wire wheels following the instructions below. Assemble the front and rear suspension units complete with axles as illustrated then attach to chassis. Add tyres to built etched wheels adding to chassis ensuring that the model sits correctly. Fit side member frames in place then add gear lever, accelerator, brake and clutch pedals along with seat. Add decal to dashboard backing plate then at etched fascia. Fit completed dashboard to chassis followed by steering wheel. Add carburettor intakes and head rest to body. Fit body to chassis followed by exhausts, when set add head shields. Trim vac forms for body windscreen and carburettor intake cover and glue in place - do not use super glue for this as it will discolour the material, a water based wood glue is ideal. Fit photo-etched radiator grille. Complete the model with the addition of the decals.

PAINTING. Paint the body and splash guards Ferrari Red. Chassis, dashboard front and rear suspension silver. Suspension springs gloss red. Pedals, and exhaust matt black, steering wheel rim, seat and headrest matt navy blue.

No 22 Mairesse DNF



PARTS LIST

- 1 Inner rim
- 2 Inner photo etched spokes
- 3 Spacer
- 4 Out photo etched spokes
(broken rims)
- 5 Outer rim
- 6 Knock on
- 7 Brake drum

Prior to assembly check parts fit together, adjusting if necessary. Apply glue sparingly where indicated.